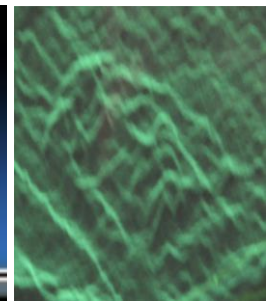




Shroud Exhibit & Museum (SEAM), Inc



TURIN SHROUD PRESENTATION

Saturday, October 8th, 1–3 PM

San Jose Catholic Church, 353 E Josephine St, La Mesa, NM

Info: ShroudNM.com Free Admission, donations support SEAM

Turin Shroud General Presentation with Spanish Interpreter

PRESENTATION by Dcn Andy Weiss discussing a variety of areas of study and the connection of New Mexico & Shroud history. Displayed: full-size 14' by 3.5' Enrie 1931 Shroud photo, 3D and other images and Shroud history time-line with dating evidence.

SHROUD research continues at the museum with the work of Dcn Pete Schumacher. His original work can be read on iSEAM website, and his 2014 study was presented at an international conference on the Turin Shroud. The bulk of Dcn Pete's study involved SEAM on-site resources, a 501-c-3 NM Corporation in Alamogordo, NM. Dr. Petrus Soons of Panama, Central America, has done extensive 3D studies & also has done much research at SEAM.

DCN ANDY encountered the Shroud in Colorado, 1998 & at SEAM, 2009–present. SEAM Director Pete asked Andy, before both were ordained, to create iSEAM, SEAM online. Dcn Andy contributed extensive Shroud & VP8 presentations, a reflection on the Shroud & Zechariah (Scripture), photo editing work & other writing. SEAM is known around the globe through seminars, lectures, missions, retreats, many visitors to SEAM & over 73,600 from 105 countries to iSEAM.