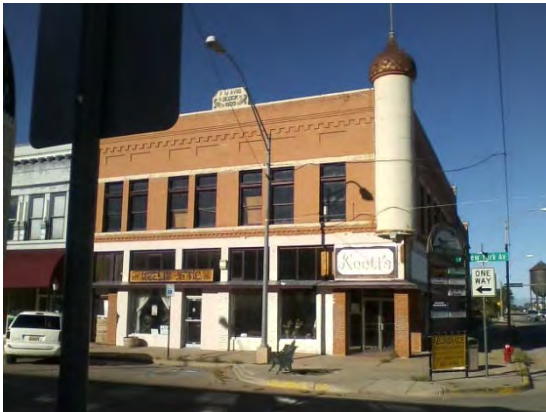




## **SHROUD EXHIBIT AND MUSEUM, INC.: PREVIEW OF OUR NEW LOCATION**

We hope to be reopened by mid-November. There is a lot of work to be done to prepare the space, move the exhibits into place, and restore everything to operational condition. The new space will eventually be much larger than our original space, but we must grow into it gradually, as much work is needed in each increment of development.

Our needs are great at this time. We need volunteers to help us with designing the space ergonomically and creatively in order to make the exhibits most attractive and effective in their new display environment. We need workers to help with painting, repairing, and moving displays. We need funds for paint, materials, and fixtures, especially those items necessary to make the building safe for our workers and visitors. Please, help us if you can.



This building was built in 1903; just five years after Secundo Pia made the first photographic negative of the Shroud of Turin. It is a part of New Mexico history. The Shroud is also a part of New Mexico history, so it is a fitting home in which to present that connection: the World's largest scientific investigation ever assembled to study a single artifact began because of the 3D proof concerning the Shroud at Sandia Laboratories in Albuquerque in 1976; and, the 1978 expedition involved more people from New Mexico and connected with New Mexico science research than from any other place in the World. In our short history as Shroud Exhibit and Museum, we have hosted over 16,000 tour guests, drawn over 60,000 Internet visitors, and given many lectures, retreats, and presentations around the country.

**DONATIONS ARE NECESSARY TO MAKE THIS A GREAT EXHIBIT AND RESEARCH CENTER. PLEASE HELP US TO MAKE THIS AN EXPERIENCE OF CHRIST JESUS THAT IS AVAILABLE TO EVERYONE. ALL CONTRIBUTIONS ARE TAX DEDUCTABLE. FOR MORE INFORMATION CALL: 575-415-5206 or Email us.**